



Following the Conference of Rhine Ministers in Basel : cautious optimism ?

At the 2013 Conference of Rhine Ministers in Basel, the representative of the French Minister for Ecology, Sustainable Development and Energy emphasised France's desire to create the conditions for salmon to return to Basel by 2020.



12'000 signatures overhanded to Laurent Roy (French Water Director) ©ERN France

He provided a short-term and a long-term plan (see box).

The NGOs welcomed the statement with cautious optimism, but also asked for further and more detailed information.

Electricité de France, (EDF, majority-owned by the government), operator of the power stations on the Upper Rhine, then declared its availability for a meeting. This took place in March.

The meeting in Strasbourg was attended by more than 20 NGO representatives and executives from EDF. An in-depth exchange of information lasting several hours followed a visit to the construction site at the Strasbourg power station (installation of a fishway).

Happily, it was noted that work on the fishway constructions in Strasbourg and Gerstheim should progress on schedule. The same applies to the extensive work that needs to

be carried out in Kembs as part of the relicensing process.

However, a large number of questions, in particular of a technical nature, has been thrown up regarding the temporary solution involving a mobile fishway.

Some remained without a satisfactory answer. Even though speed is of the essence (2020 will be here tomorrow), the project still does not seem to have progressed beyond the early stages!

Disillusionment after the meeting : EDF stepping back ?

When it then came to the main part of the discussion, namely the proposed fishways in Rhinau and Marckolsheim, it became clear that EDF evidently first wants to know what solution there is for Vogelgrün and whether the mobile fishway system is working. In other words: Rhinau and Marckolsheim are to be put on the back burner for now. At least, according to the interpretation of the NGOs.



Visiting Strasbourg dam © ERN France

In their first comment, the NGOs expressed their dissatisfaction, and will shortly be sending EDF a detailed catalogue of questions.

A short-term and a long-term plan

The power stations at Strasbourg and Gerstheim are to be equipped with fishways by 2016.

A special catching system will then be constructed at Rhinau power station. This should enable migratory fish to be guided into an underwater cage with Rhine water flowing through it (called a mobile fishway). Every two to three days, it will be pulled by ships through the sluices at Marckolsheim and Vogelgrün into the Old Rhine and opened there.

This means that by 2020, migratory fish should be able to swim to Basel freely and without hindrance. According to EDF, this suggestion is based on ideas by eminent French specialists.

And according to the French Ministry, Rhinau and Marckolsheim are to be equipped with permanent fishways at the same time as this temporary solution, but they could not be functional until after 2020.

As there is no solution yet for Vogelgrün, the ICRP is to organise an international workshop.

France's ministerial representative did not directly address the issue of the power stations in Canal d'Alsace and downstream passage at the conference.

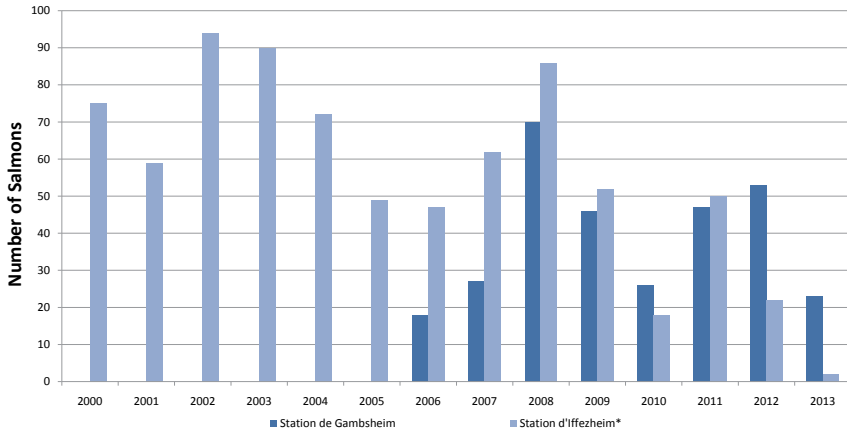


Rhine - Salmon Comeback

The latest figures: Upstream passage in the Rhine, Loire and Dordogne

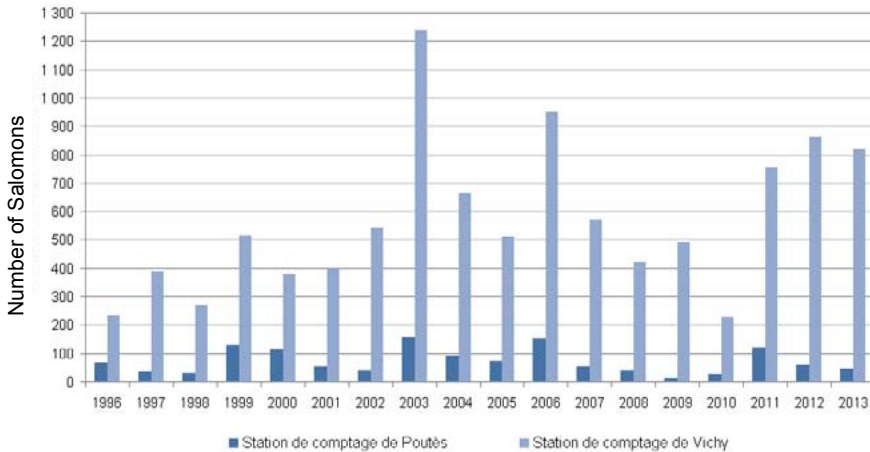
The French authorities released a comparison of the latest figures a few days ago. The verdict is clear: salmon is still far away from being saved !

Number of Salmons counted on the axis Rhine



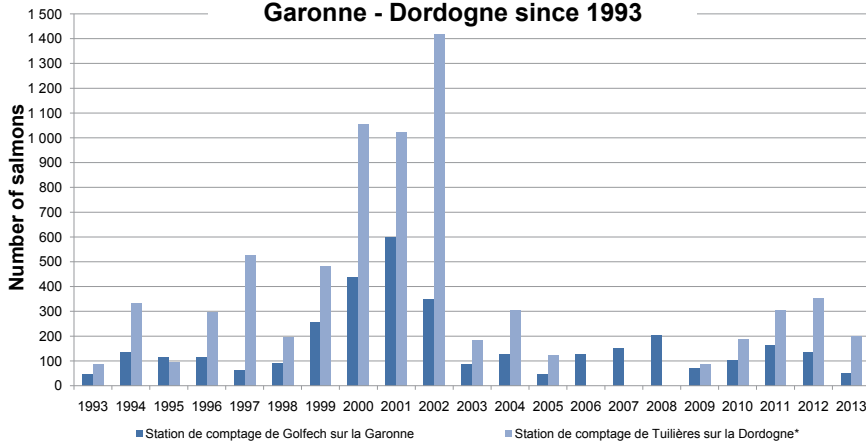
*The Iffezheim station is closed for renovation since april 2013
 Source : Saumon-Rhin, 2014

Number of Salmons counted on the axis Loire - Allier at Poutès and Vichy



Source : Logrami - Onema, 2014

Number of Salmons counted on the axis Garonne - Dordogne since 1993



Note : * After an incident happened the 01.29.2006, the Tuilières fishway could not operate until the 03.06.2009.
 Source : Migado, 2014.

ICRP Seminar on Vogelgrün power station



Vogelgrün Dam © ERN France

In line with the resolution passed at the 2013 Ministerial Conference in Basel, the ICRP wishes to organise a seminar in autumn 2014 on the complex issue of the creation of continuity at Vogelgrün power station. A working group has already started work on this under the direction of former IKSr president André Weidenhaupt.

Rhein-Sieg wild salmon centre founded

As of last November, around 200,000 smolts will be «produced» every year. One further step towards the sustainable reintroduction of salmon in the Rhine River basin.

www.rhfv.de



www.salmoncomeback.org



Rhine - Salmon Comeback

Saumon à la bâloise

Für 5 Personen

5 Tranchen	Lachs, frisch, angeräuchert
4	Zwiebeln, mittelgross, in Ringe geschnitten
100 g	Butter
5 EL	Bouillon, konzentriert
	Salz
	Weisser Pfeffer aus der Mühle
1-2 Würfel	Glace de viande (nach Gusto)

• Die Hälfte der Butter in einer Bratpfanne zergehen lassen, die Zwiebelringe darin rösten, bis sie weich und schön braun sind.
 • Die Zwiebeln herausnehmen und in einer Schüssel beiseite stellen.
 • Die restliche Butter in die Bratpfanne geben und heiss werden lassen.
 • Die Lachstranchen mit Küchenpapier trockentupfen, salzen und pfeffern.
 • Auf jeder Seite drei bis vier Minuten braten. Wenn die Butter zu verbrennen droht, löffelweise Ecuillon zugeben.
 • Die Lachstranchen auf eine warme Platte legen und warm stellen: Eventuell noch etwas Ecuillon in die Bratpfanne geben, den Bratensatz loskratzen, die Zwiebeln darin aufkochen. Nach Belieben Glace de viande zugeben. Über die Lachstranchen geben.

BEMERKUNG:
 Der Lachs wird trocken, wenn er zu lange auf dem Feuer ist. Man beginnt mit dem Braten, wenn die Gäste bereits am Tisch sitzen, und richtet an, sobald sich das Fleisch von der Mittelgräte löst.



Wie der Lachs wieder Basler wird

Für eine Rückkehr nach Basel bis 2020

- 1 Schleuse im Haringvliet öffnen
- 5 Kraftwerke am deutsch-französischen Oberrhein für Wanderfische passierbar machen
- 3 Kraftwerke am Canal d'Alsace fischgängig machen, sofern nicht genügend Lachse den Aufstieg über den Restrhein finden.
- 5 Fischaufstiegshilfen für die Staustufen Strassburg, Gerstheim, Rhinau, Marckolsheim und Vogelgrün bauen

Zusammenarbeit mit allen Stakeholdern

- Bis 2015 statte man das erste Kraftwerk in Strassburg mit einem funktionierenden Fischtreppe aus.
- Man öffne die holländische Haringvlietschleuse im Rheindelta bis spätestens 2018, damit die Lachse in den Rheinhauptstrom einsteigen können.
- Man beginne schnell mit der Planung einer Fischtreppe in Gerstheim, damit diese bis 2016 auch fertig gestellt ist.
- Man organisiere einen Ideenwettbewerb, wie der Lachs in Vogelgrün/Breisach vom Kanal in den Rest-Rhein überführt werden kann. Anschliessend realisiere man den besten Vorschlag bis spätestens 2020.
- Parallel dazu plane man Fischtreppen der Oberrheinstaufungen Rhinau und Marckolsheim und baue sie bis 2018.
- Wenn die Lachse 2020 in Basel ankommen, richte man diesen zu Ehren ein grosses Fest aus.

OLD RECIPE AND PROPOSALS HOW SALMONS COULD COMEBACK TO BASEL

© WWF CH

Review of the Ministerial Conference in Basel

Various topics were addressed at the Conference of Rhine Minister in Basel. One important point was, of course, the long-desired continuity of the Rhine. Pressure by NGOs has brought results; France seems finally to be giving in, and Holland has also clearly announced the partial opening of the

sluices of the Haringvliet dam in the Rhine Delta in 2018.

The overhanded 12'000 signatures, the actions in Strasbourg, Freiburg im Breisgau with Alsace Nature and Regiowasser/BBU /BUND, ERN and WWF, and the appearance of the

Salmoncomeback coalition in Basel, resonated tremendously with the media. The sampling of «Saumon à la bâloise» with its humorous recipe and instructions of how to get salmon to Basel was warmly welcome by the delegates at the Conference of Rhine Ministers...



Action at Strasbourg,



at Freiburg im Breisgau



and at Basel congress center © ERN France



Rhine - Salmon Comeback

Watch the Video on
Haringvliet / Netherlands



A new film on the project to open the Haringvliet dam for fish migration (published by the dutch Rijkswaterstaat).

- [original version in dutch](#)
- english (subtitled) : [The Gap](#)

Do salmon farms help or hurt the declining wild salmon population ?



A CBS report on the controversy surrounding the multibillion dollars industry.

[Read the interview \(extract\) and watch the video](#)

Drought in the U.S. :
25 millions of salmons
traveling by trucks to the
Pacific

[Read the article in «Le Monde» \(in french\)](#)

The Salmoncomeback campaign has been initiated by WWF Switzerland and coordinated on an international level by European Rivers Network. The campaign is supported by a growing broad coalition of NGOs.

24 May 2014 : World Fish Migration Day

World Fish Migration Day (WFMD) is a one-day global event to call attention for open rivers and migratory fish.

Over 240 actions are already planned, some of them in the River Rhine basin. There's still time to join in.

We encourage organisers to be creative with their events, but here are a few examples of what could be done:

Field trips, e.g. to rivers, fish passages or sites where dams have been removed, Citizen science projects, Celebrating the opening of a new fishway, River cruises, Seminar for professionals on fish passage issues, Workshops/talks for members of the public...

You will find further information at www.worldfishmigrationday.com



German post to help the salmon

A stamp to support the salmon restauration has been presented by the German Post AG (January 2014).
Link : [Deutsche Post](#)



Announcement

October 30 - 31 :
Symposium on fish
migration in Switzerland

organised by EAWAG,
«Wasseragenda 21» and the WWF
Switzerland

in Biel (CH), Congress Center

Excursion on November 1st.

More information as soon as possible on

www.salmoncomeback.org

Editor : Rhine Salmon Comeback Campaign
Coordinator : Roberto Epple
contact@salmoncomeback.org
Redactor : Roberto Epple et Corinne Forst
Layout : Lucie Galland
Graphic Design : Yves Montillet et partners



Supported by : **patagonia**