

# Dam removal consequences: migratory and invasive species



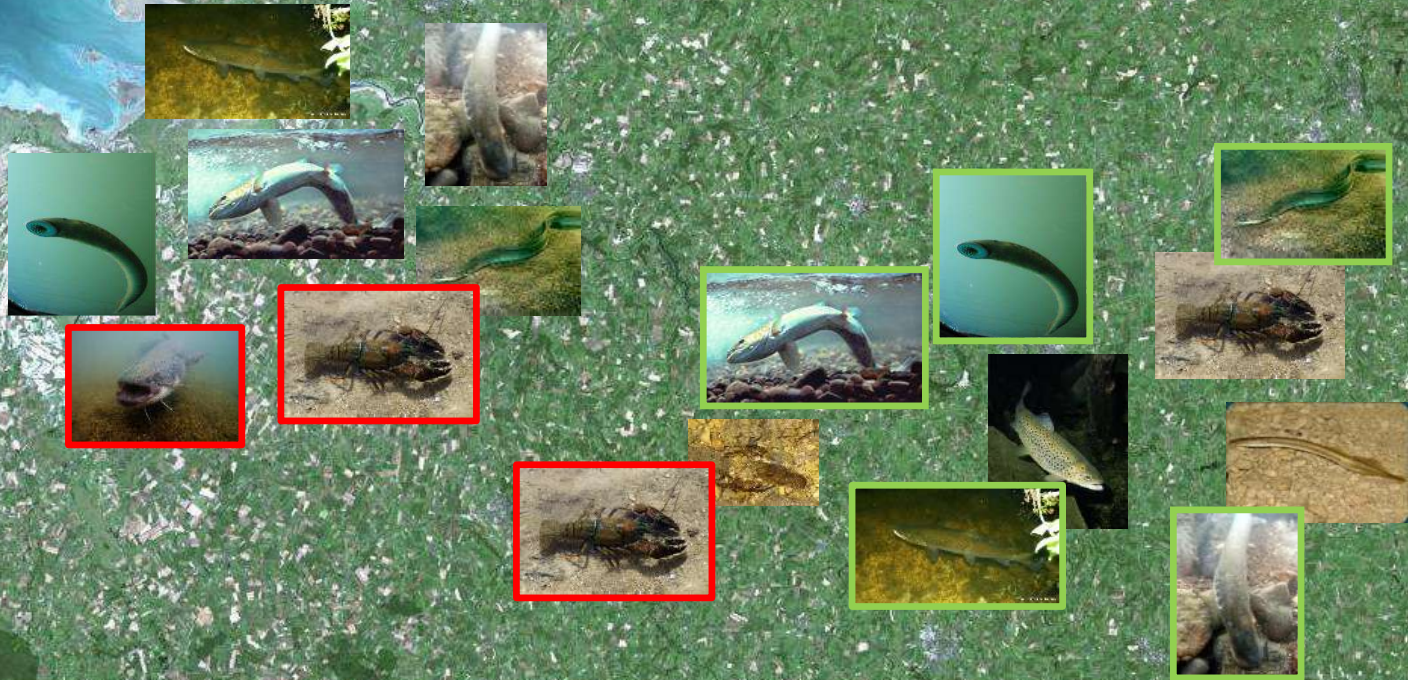
Échelle 1 : 272 880

0 ————— 5 km





# Dam removal consequences: migratory and invasive species

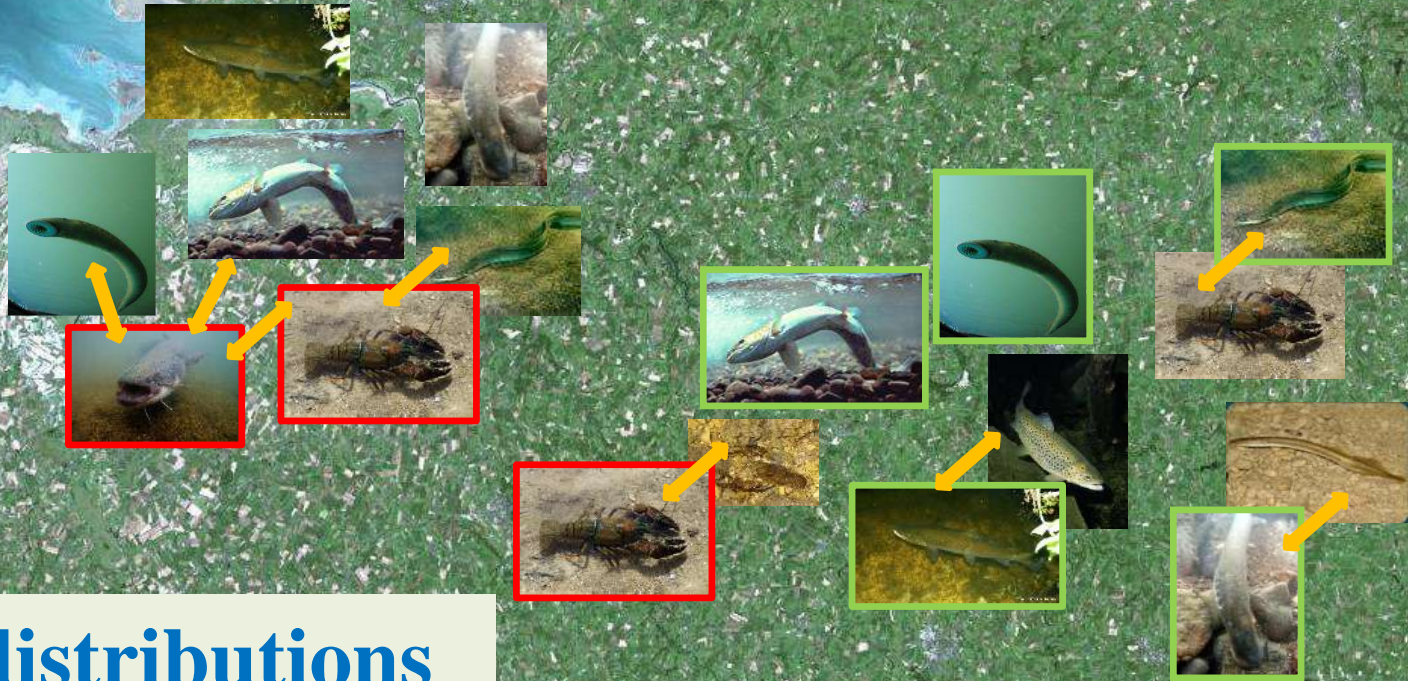


Échelle 1 : 272 880

0 ————— 5 km



# Dam removal consequences: migratory and invasive species

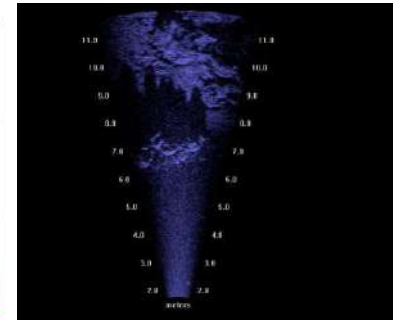
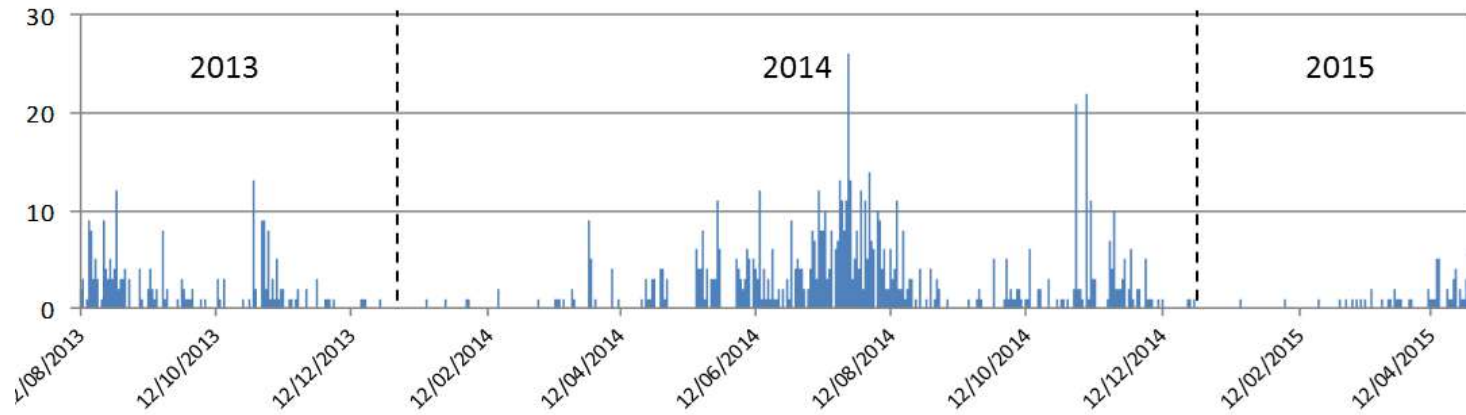


**=> New distributions**  
**=> New interactions**

Échelle 1 : 272 880

0 5 km

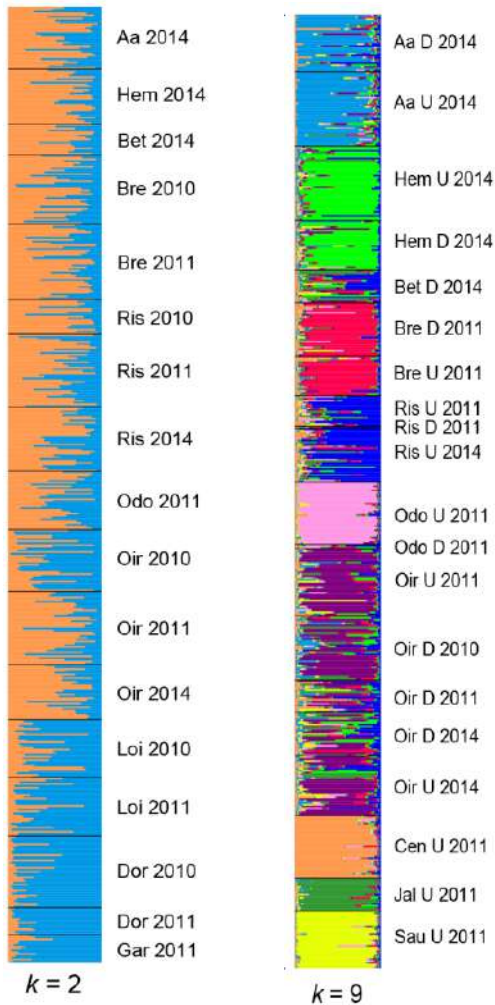
# Dam removal consequences: migratory and invasive species



Measuring recolonization dynamics:

**Acoustic detection of migrating salmons**

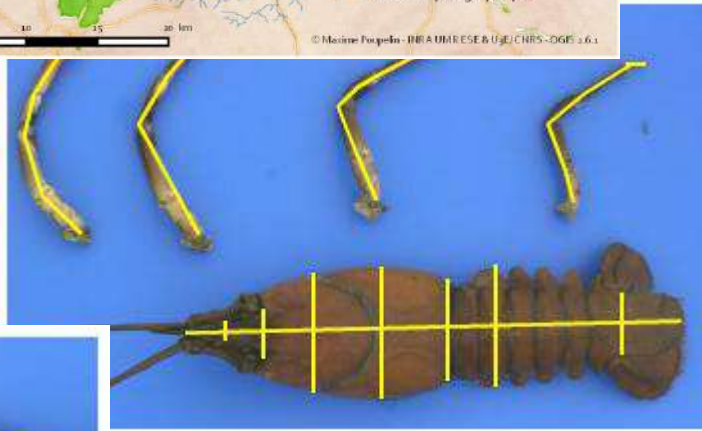
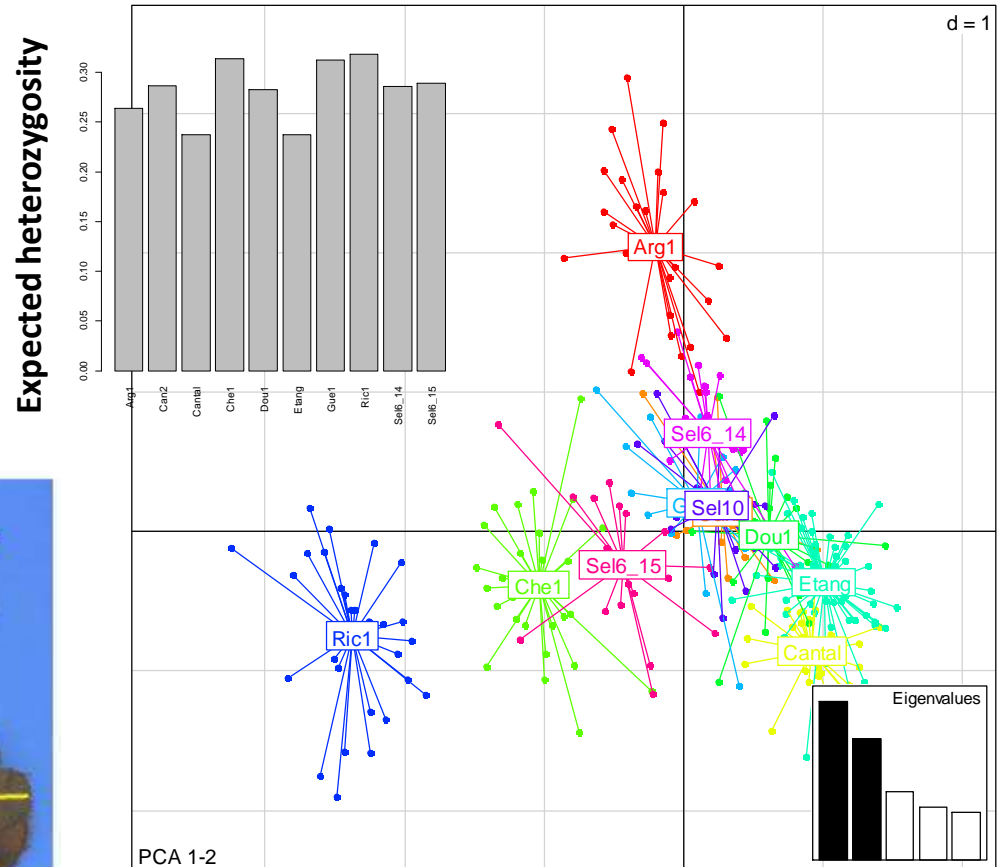
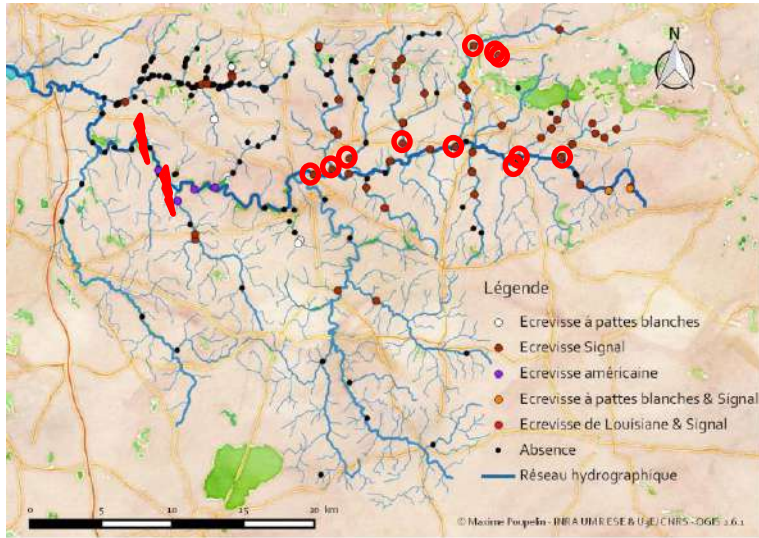
# Dam removal consequences: migratory and invasive species



Resident vs migratory populations:  
**Gene flow and the fate  
of the brook lamprey**



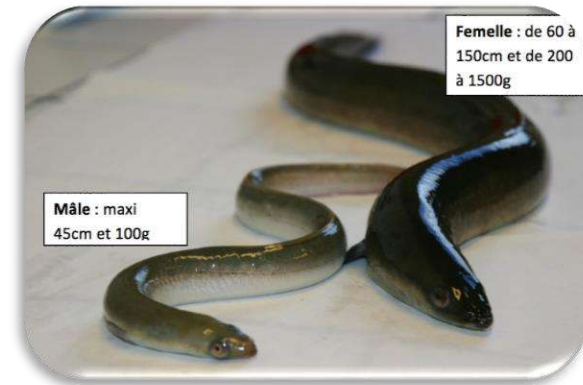
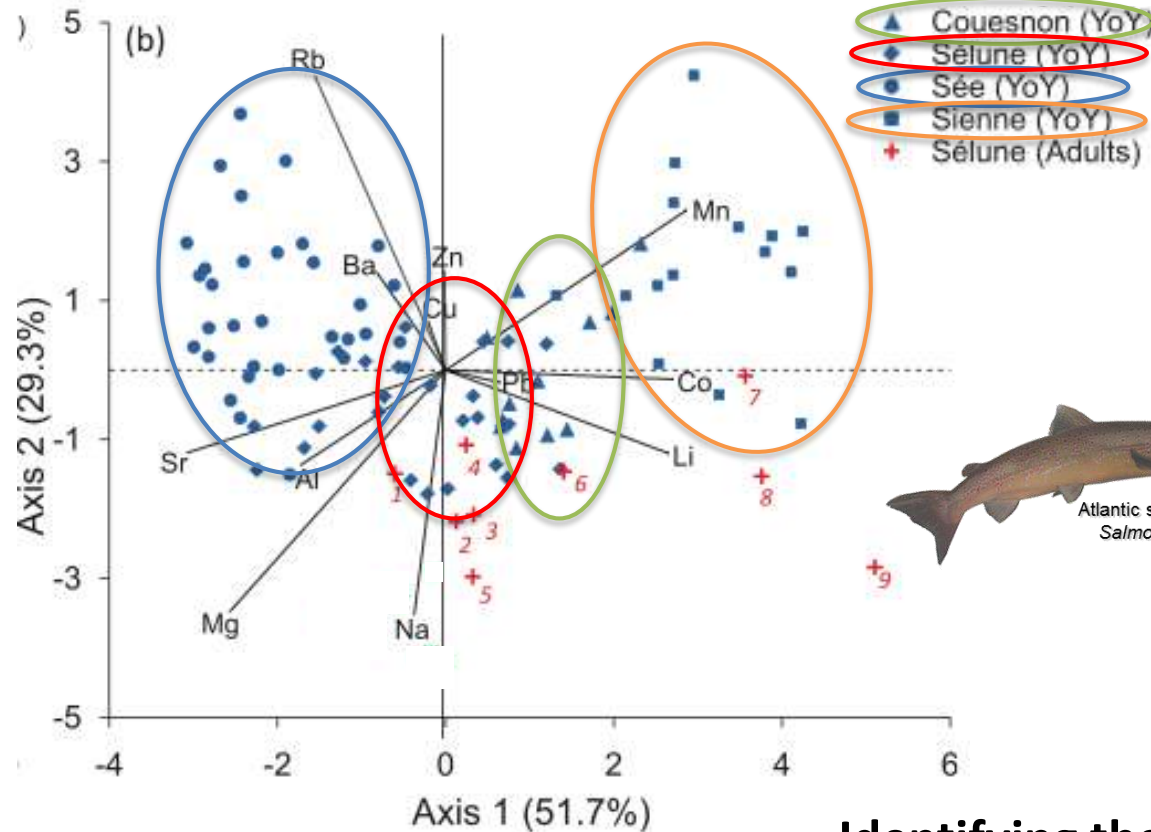
# Dam removal consequences: migratory and invasive species



Genetically and phenotypically identifying colonizing individuals:  
**Morphometry and genetics of invasive crayfish**

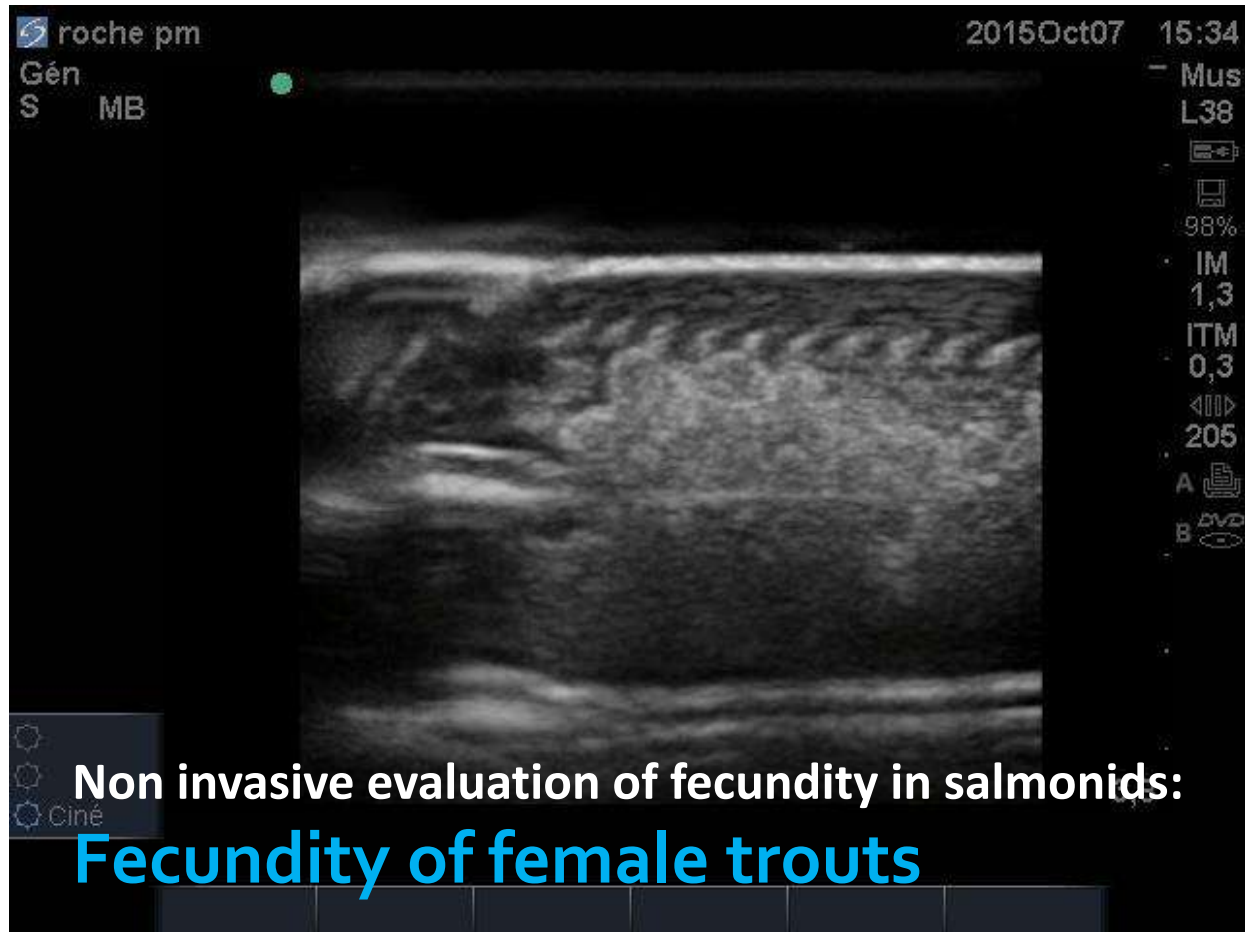


# Dam removal consequences: migratory and invasive species



Identifying the origin of salmons and eels:  
**Otolith microchemistry**

# Dam removal consequences: migratory and invasive species



# Dam removal on the Sélune river:

## 1. A large-scale ecological experiment

- ⇒ What species benefit most from dam removal in terms of recolonization of the Sélune river and its tributaries?
- ⇒ What are the consequences of dam removal on the demo-genetic structure of recolonizing and resident populations?
- ⇒ What are the consequences of (re)colonisation dynamics on species traits?

## 2. Specific management questions

- ⇒ How to favor native *vs* invasive (cray)fish species?
- ⇒ What is the origin of recolonizing (eel and salmon) individuals?
- ⇒ How do resident *vs* immigrant individuals perform?